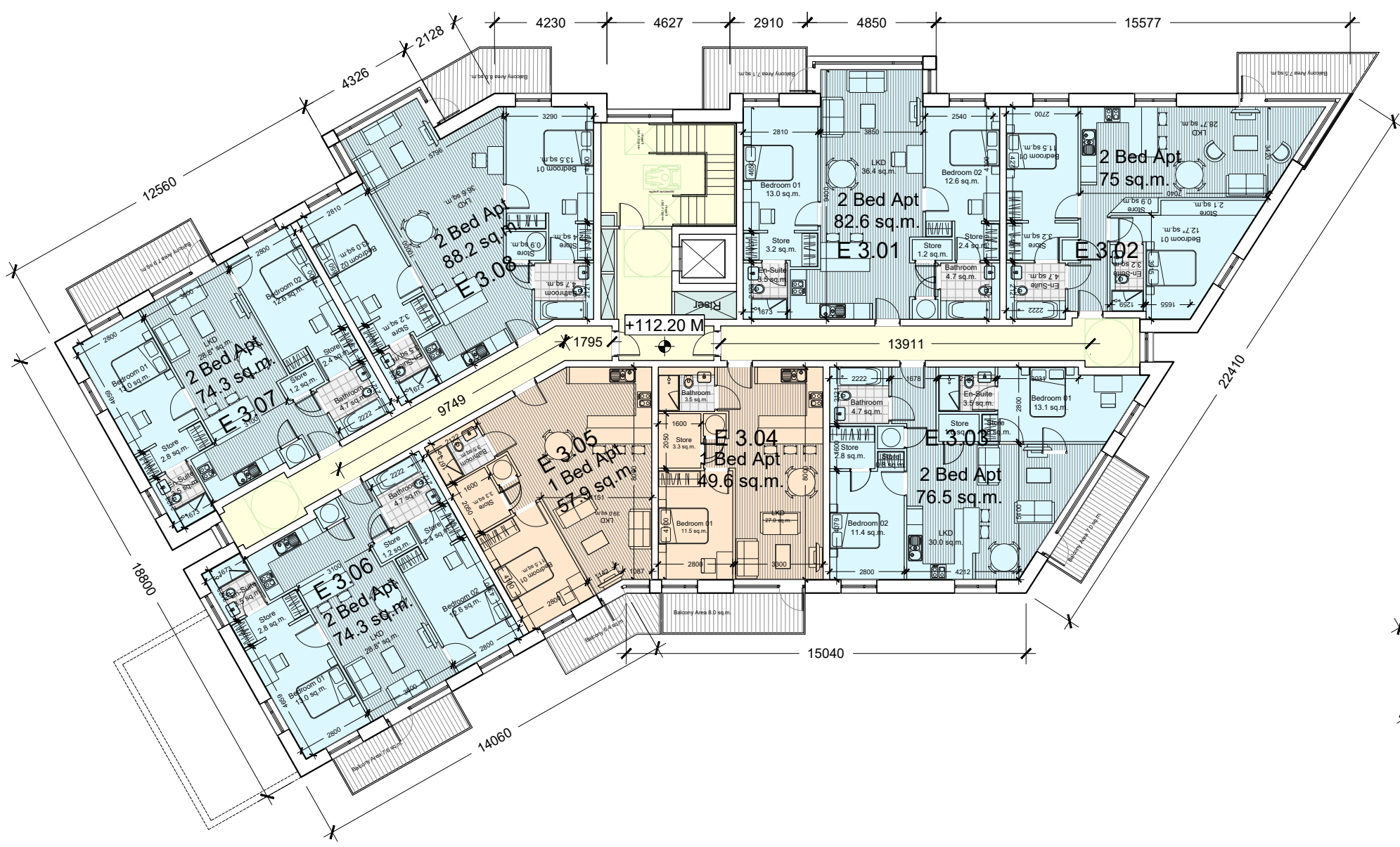
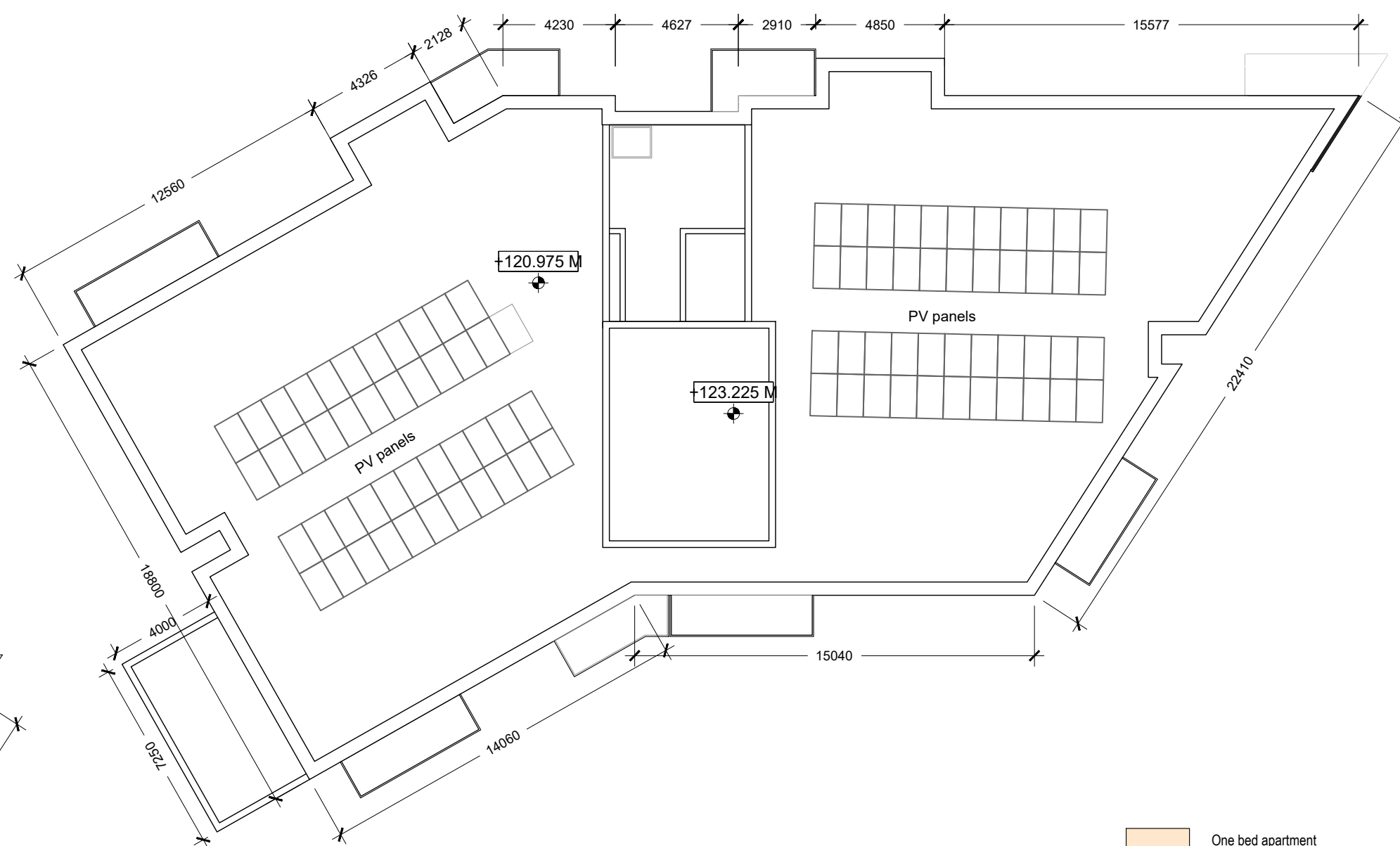


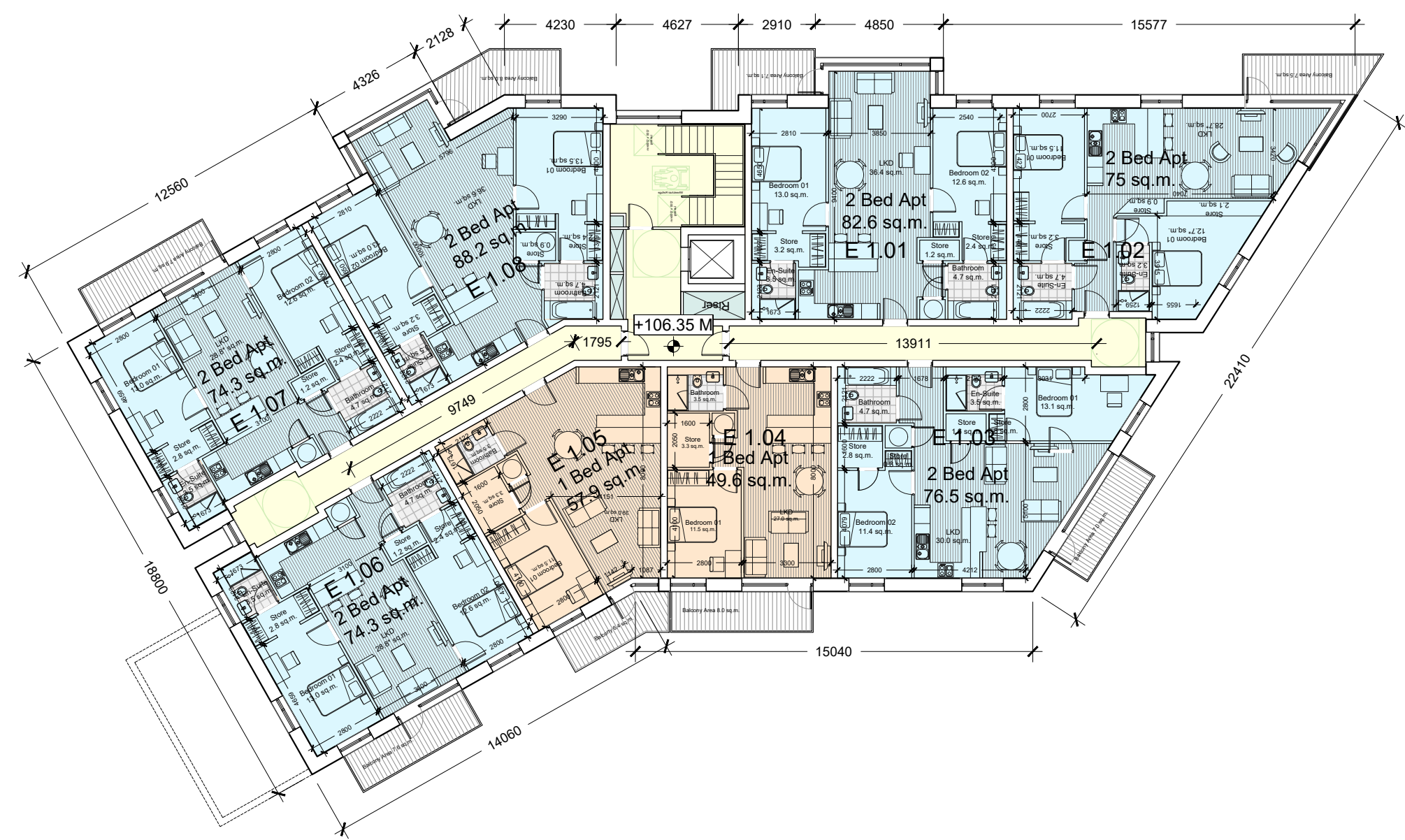
Block E_Ground floor plan
Scale 1:200 @ A1



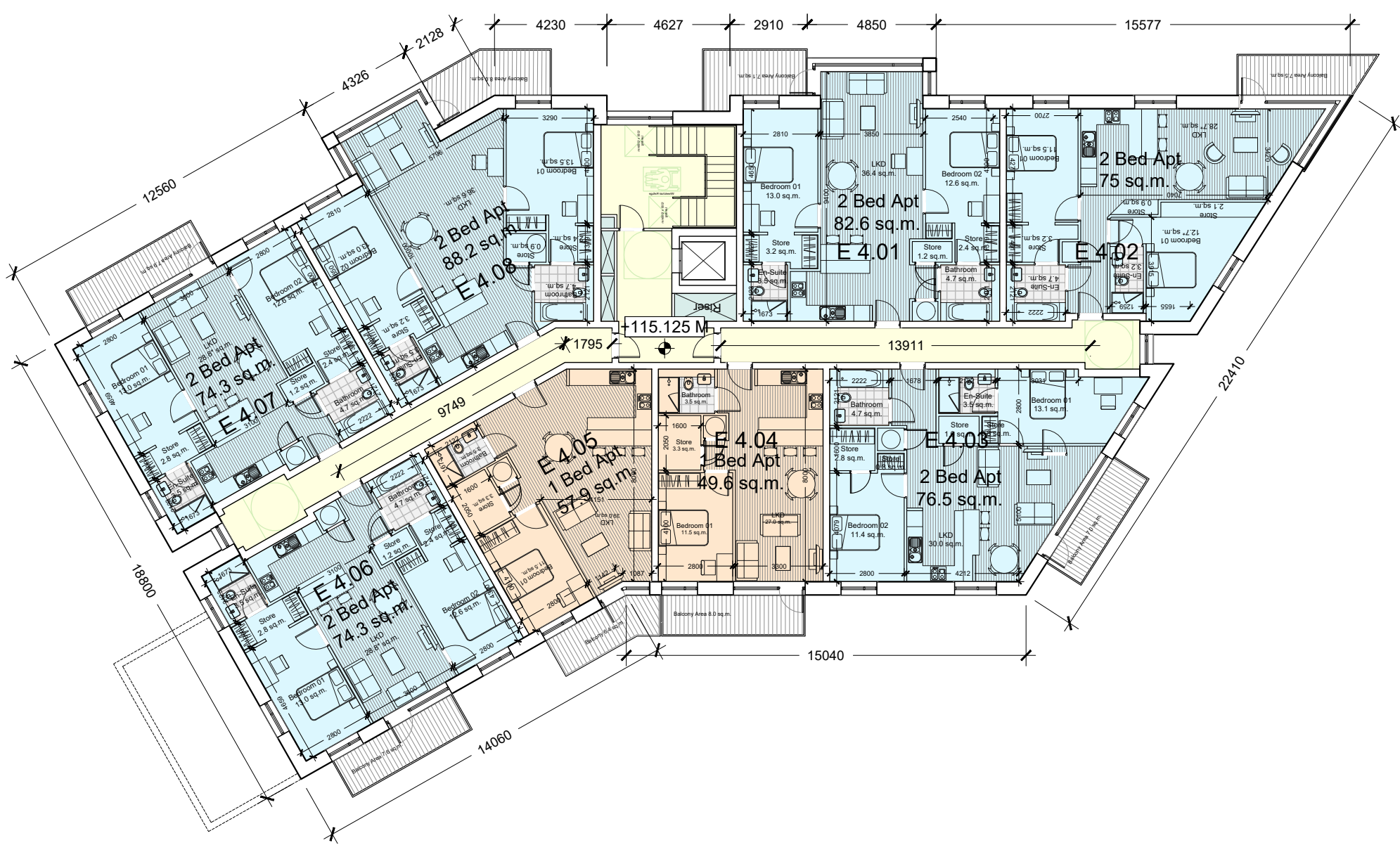
Block E_Third floor plan
Scale 1:200 @ A1



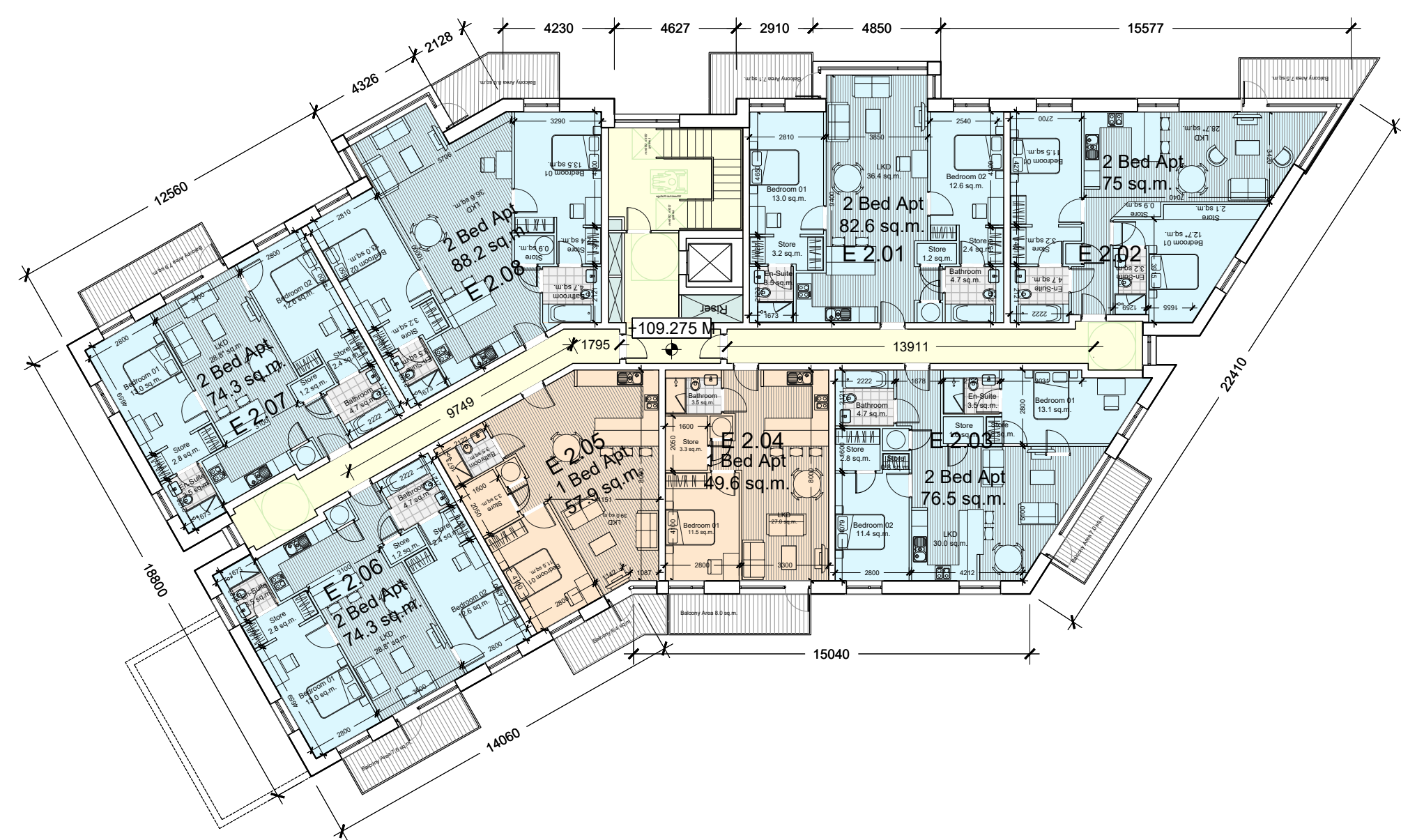
Block E_Roof plan
Scale 1:200 @ A1



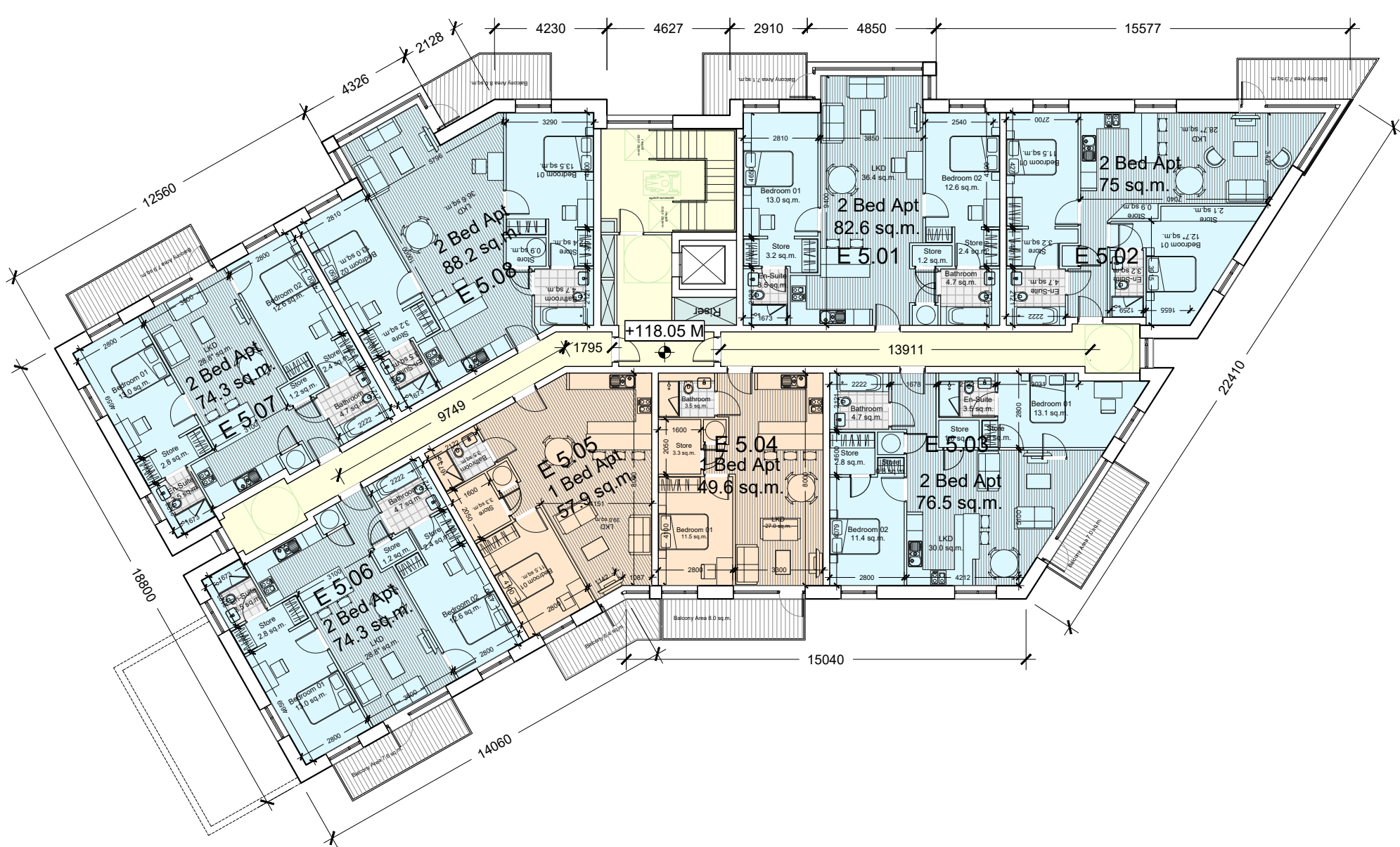
Block E_First floor plan
Scale 1:200 @ A1



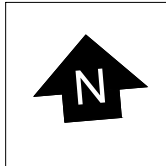
Block E_Fourth floor plan
Scale 1:200 @ A1



Block E_Second floor plan
Scale 1:200 @ A1



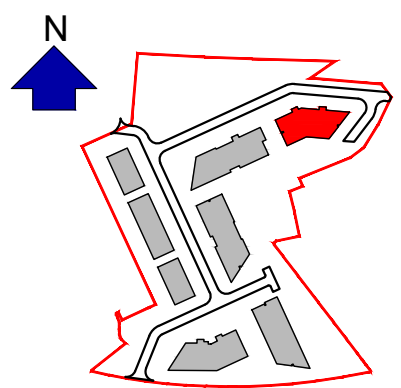
Block E_Fifth floor plan
Scale 1:200 @ A1



- GENERAL NOTES
1. COPYRIGHT RESERVED
 2. DO NOT SCALE DRAWING. USE FIGURED DIMENSIONS ONLY.
 3. ALL DISCREPANCIES TO BE REPORTED TO ARCHITECT
 4. THE CONTRACTOR IS RESPONSIBLE FOR CHECKING ALL LEVELS AND DIMENSIONS.
 5. ALL STRUCTURE TO BE TO STRUCTURAL ENGINEERS DETAILS.
 6. ALL MECHANICAL SERVICES TO SERVICES ENGINEERS DETAILS.
 7. ALL PROPRIETARY ITEMS TO BE INSTALLED IN ACCORDANCE WITH MANUFACTURERS INSTRUCTIONS.
 8. CONTRACTOR IS RESPONSIBLE FOR THE COORDINATION OF STRUCTURE FINISHES AND SERVICES.

| REV | DATE | DESCRIPTION | BY |
|-----|------|-------------|----|
| | | | |
| | | | |
| | | | |
| | | | |

- One bed apartment
- Two bed 4 person apartment
- Circulation
- Storage & Services
- Community space (Block A)
- Amenity area (Block C)



Keyplan

JOHN FLEMING
ARCHITECTS

The Tree House
17 Richview Office Park, DUBLIN 14.
T: (01) 6689888 E: info@jfa.ie W: www.jfa.ie

| | |
|-------------------|---|
| CLIENT | Ardstone Homes Ltd. |
| PROJECT | White Pines East SHD |
| DRAWING | Apartment Block E |
| Floor plans (ALL) | |
| SCALE | 1:200@A1 |
| JOB NO. | 1941 |
| DRAWN BY | OC-EH |
| DATE | March 2021 |
| DRAWING NUMBER | WPE-JFA-XX-AE-DR-A-P2005 |
| DRAWING LOCATION | w:\19 jobs\1941\03-planning\3.1-planning application\3.1.2-arch\block e |
| DRAWING STATUS | Planning |

